

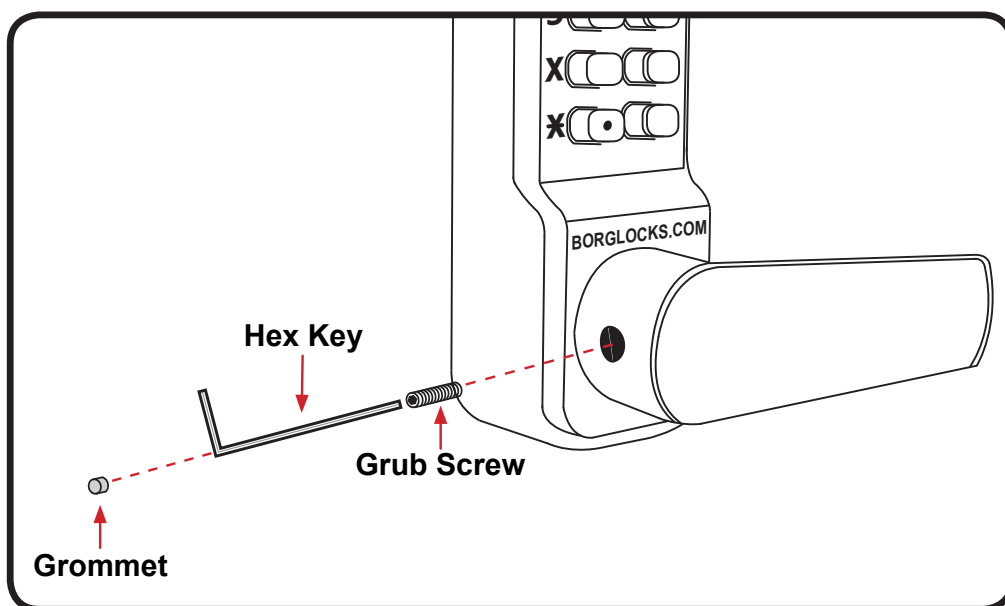
### CHANGING THE HANDING OF THE UNIT

All units come preset right hand, unless left hand has been specifically ordered.

#### Keypad

To change the handing on the keypad, remove the grey grommet located on the neck of the handle. Using a 2.5mm hex key remove the grub screw underneath; this will allow the lever to come off from the handle holder and placed in the opposite direction. Now facing the correct direction the grub screw and grommet can be replaced.

**Please note: If the handle is stiff to turn or does not return under its own spring pressure, the grub screw may be too tight and need loosening 1/4 turn.**



#### Inside Lever Handle

To change the handing of the inside lever handle, the steps are same as above for the keypad. The only additional step is to move the handing screw on the reverse of the handle as per the image below from point **A** to point **B**.

**Please note: If the handle is stiff to turn or does not return under its own spring pressure, the grub screw may be too tight and need loosening 1/4 turn.**

