

**Yale®**

# 8K118 Window Lock Fitting Instructions

## Tools Required



Drill

**Drill Bits  
Required:**  
6mm Drill BitPosidrive  
Screwdriver

Bradawl



Pencil

- If fixing screws into hardwood frames, use a suitable drill to make a pilot hole

## Fitting instructions

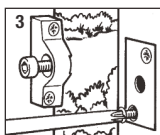
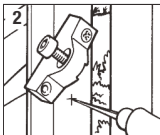
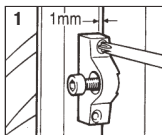
### Prior to fitting familiarise yourself with its simple action.

If fitting on to a hardwood window it may be necessary to drill pilot holes for the fixing screws. Caution: Before fitting screws check position of glass and seals.

1. Close window and position lock body onto the opening window 1mm away from the fixed frame. Mark, prepare and loosely fit lock with top fixing screw. (Fig 1)
2. Mark bottom fixing hole, open window and swing lock body aside then prepare hole and fix lock with screw. Secure top and bottom screws. **Do not overtighten** (Fig 2).
3. Close window and operate the locking screw to mark the fixed frame. Open window and where marked carefully drill a 6mm dia hole, 6mm deep. Hole depth can be marked on drill bit with tape. Close the window to check that the locking screw enters the hole centrally. Re-open the window and place the locking plate centrally over the hole, mark around its edge and recess into the fixed frame. On angled frames ensure the locking plate is square to the bolt. Mark, prepare and fit top and bottom fixing screws. **Do not overtighten.**

### Do not excessively overtighten when locking

When cleaning do not use abrasive cleaners, solvents or polish. Only a moist cloth.

**Yale®**

## The world's favourite lock since 1843

School Street, Willenhall, West Midlands WV13 3PW

[www.yale.co.uk](http://www.yale.co.uk) Tel: +44 (0) 1902 364647 E-mail: [info@yale.co.uk](mailto:info@yale.co.uk)